

Pool Care

**PINCH·A·PENNY
POOL·PATIO·SPA**

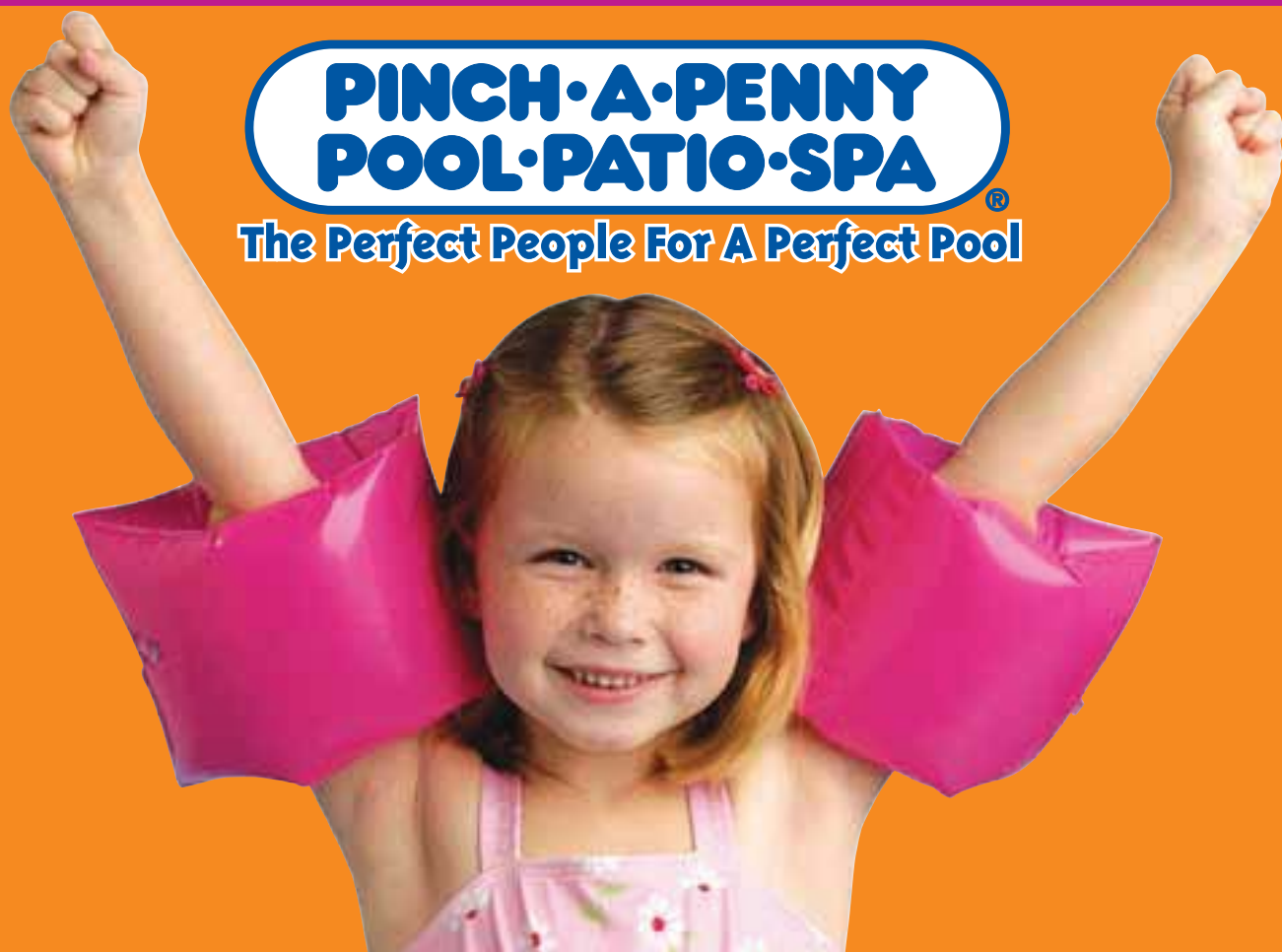
The Perfect People For A Perfect Pool[®]

Guide

A publication
on pool care
made easy from
the experts at
Pinch A Penny

PINCH·A·PENNY POOL·PATIO·SPA®

The Perfect People For A Perfect Pool



Are we
having **fun**
yet?

After opening over 200 stores in Florida, Georgia, and Alabama and serving our customers for over 35 years, there's one thing we hope you'll add to your pool in as generous amounts as the water you fill it with. That's fun. So we've developed products, services, and maintenance routines, and put them all together in this easy-to-follow publication, *The Perfect Pool*. This will give you all the knowledge you need to make pool care child's play.

.....

For the store nearest you call 1-800-234-1616,
or visit our website at www.pinchapenny.com.

©2009 Pinch A Penny, Inc.

Table of Contents

• Trust The Experts At Pinch A Penny	2
In this guide: Everything you always wanted to know about pool care	
• H2Oh!	3
Understanding the chemical composition of a healthy pool	
• Welcome To The Pool House	4
Let's look at how you can build a perfectly balanced pool	
• Passing The Water Test With Flying Colors	4
How to know just how much fun your pool holds	
• Chlorine Is Clearly The Best Way To Keep Your Pool Sanitary	7
Why do I need chlorine? Is one type of chlorine better than another?	
• Maintaining The Perfect Pool Is As Easy As ABC	8
• Chlorine For All Types Of Pools	9
• What About Chlorine Alternatives	10
• Salt Pools	12
• How To Make A Clean Sweep	16
Tips for cleaning your pool	
• Removing Stains From Your Pool	17
• "What Do I Do Now?"	18
An at-a-glance look at how to fix whatever ails your pool	
• Pump It Up!	22
The basic pump types Tips for keeping it pumping	
• Some Great Filter Information	23
The basic filter types Keeping filters clean	
• The Ins And Outs Of Above-Ground Pool Care	25
• "What Do I Do Now?"	26
An at-a-glance look at how to fix mechanical problems with your pool's equipment	
• Warm Up To Year-Round Fun	28
Heating your pool with heat pumps, gas heaters or solar systems	
• Some Hot Tips On Caring For Your Spa	30
• Play It Safe	32
• Charting Your Progress	34
• Your Pool Profile	37
• Glossary Of Pool Terms	38

Trust The Experts

After 35 years, the opening of over 200 stores in Florida, Georgia and Alabama and aligning ourselves with the world's top pool and spa product manufacturers, it's safe to say that no one knows pools better than Pinch A Penny. Because not only are we the largest franchise pool and spa care company, our people are the most knowledgeable in the industry. Period.

For one thing, Pinch A Penny has more pool professionals who have become Certified Pool Operators by the National Swimming Pool Foundation than any other company. They've all attended in-depth courses on everything from equipment maintenance to the chemistry of pool and spa care. We've seen it all, from water that looks like pea soup to pools that look like a milk bath. We've fixed the problem time and time again, and have shown our customers like you how to keep it from happening again.

After all, you and your family are the most important thing that goes into your pool. So we're here to help you keep your water healthy, sparkling and always inviting.



In This Guide: Everything You Always Wanted To Know About Pool Care, But Didn't Know Who To Ask.

Call 1-800-234-1616
for the store nearest you,
or visit us at
www.pinchapenny.com

Now you know who to ask, your local Pinch A Penny expert. To find the store nearest you, call 1-800-234-1616 or visit us at www.pinchapenny.com. But before you do, browse through this magazine for tips, hints, background and the plain facts on pool care. It'll tell you everything you need to know for a beautiful pool. Then collect a sample of your pool water and bring it in for a free computer water analysis. We'll not only check your water seven ways – for chlorine, pH, acid or base demand, total alkalinity, calcium hardness, stabilizer and total dissolved solids – we'll keep an on-going history of your pool's condition. So every time we check your water, we get to know your pool a little better. (For easy-to-follow directions on collecting water samples and determining the amount of gallons your pool holds, please see pages 4 & 5). In short, we'll show you in black and white how to keep your water its bluest.



H2Oh!!!

Understanding the chemical composition of a healthy pool.

Just imagine – your drinking water may not be good enough to swim in. After all, tap water often has high levels of minerals and low pH – two factors that can harm your pool and prevent chemical treatments from doing their job.

The two most important things to remember about the health of your pool are that it must be sanitized and it must be balanced. The best way to sanitize your pool is with chlorine, as you will read later on page 7. Keeping your pool balanced, which means keeping the five basic pool water components (pH, total alkalinity, calcium hardness, total dissolved solids and stabilizer) within their proper ranges, helps your sanitizer work more effectively. That's why we say to achieve a healthy pool, sanitizing and balancing are equally important.

Total Alkalinity

In simple terms, total alkalinity refers to how much alkaline is in the water. But you can't fully know the importance of total alkalinity without referring to pH, because the two go hand-in-hand. High alkaline water leads to high pH. Low alkaline water leads to low pH. For now, just remember that the average swimming pool should have an alkalinity reading of 100 ppm.

pH

Keeping your pH levels within the proper range is not only important for swimmer comfort, it's also important for keeping your equipment and pool finish in good condition. pH refers to the acidity or baseness of your pool water. All you need to remember is that a proper pH level is around 7.4 to 7.6 on a pH test kit's numeric scale. 0 to 7 reflects a low or acidic pH. 8 to 14 means the pool has a base pH level. Low pH readings mean your chlorine will dissipate a lot quicker. High pH levels make chlorine inactive. And that means the money you're spending on chlorine is a waste.

Calcium Hardness

Anyone who's ever washed their hair in hard water knows that hard water doesn't do much for getting up a good lather. But in your pool, just the right amount of calcium is essential. Too little and your plaster can erode. Too much and your water could become cloudy, scale could form and stains might start. 200 to 400 ppm is the general range for calcium hardness, while 300 ppm is ideal for the average pool.

Stabilizer

Stabilizer is to chlorine like your home's insulation is to keeping in hot or cold air – it helps retain your chlorine longer just as insulation helps retain heat or air conditioning. Stabilizer is even added to some chlorine compounds to protect them from the breakdown effects of sunlight. When your stabilizer level is low, you'll use a lot more chlorine. When it's high, you may need to dilute your pool water to bring it back into the 40 to 100 ppm ideal range.

Total Dissolved Solids (TDS)

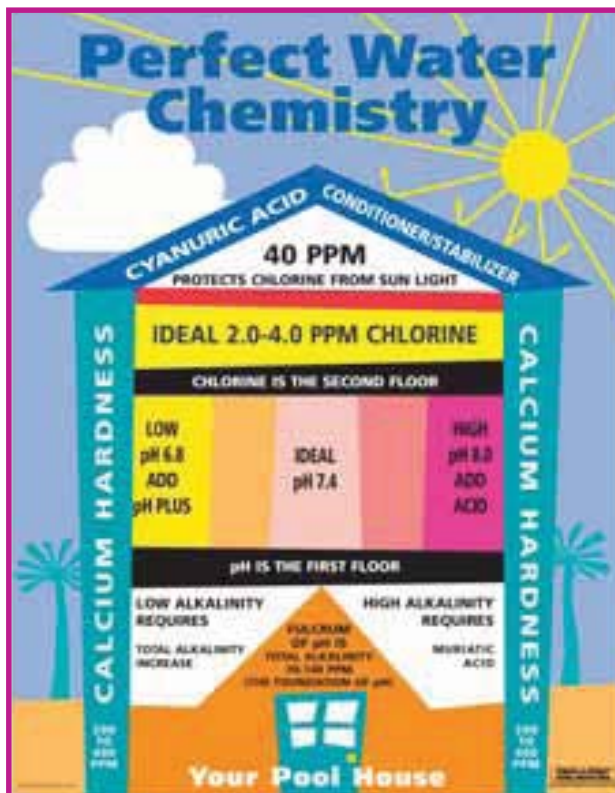
Like calcium, there are many other dissolved elements in pool water. Unless it's distilled, all water contains dissolved minerals. As pool water evaporates, minerals remain behind and become concentrated. The more concentrated these minerals become, the harder it is for chemical additives to work and stains can form. If you have 3000 ppm or more of total dissolved solids or TDS, you may need to drain some water and add fresh water.



Welcome To The Pool House

Now that you know what's
in your water, let's look at
how you can build a
perfectly balanced pool.

We call it the Pool House, and it's a simple diagram that clearly shows you the chemical structure of a healthy pool. Think of the various elements within your pool water like the different components you'd use to build a house. The foundation for crystal clear water begins with a total alkalinity of 70 to 140 ppm (ideal range varies based on pool finish). Moving up to the first floor, pH levels should be maintained as close to the ideal of 7.4 as possible. A proper chlorine level of 2 to 4 ppm forms the second floor, and a stabilizer reading of 40 ppm tops everything off as the roof. Calcium hardness is the walls which keep the floors in place, and should be maintained at 200 to 400 ppm. So keep this structure in mind when testing your water – it's an easy way to clearly picture the components of a perfect pool.



Passing The Water Test With Flying Colors

All this talk of pH and ppm seems confusing until you apply it to a test kit, which is a simple way to determine the various characteristics of your pool water. That's where it all comes together. There are many types of test kits available, including test strips. For the most accurate assessment of your pool water, you should use (at the very minimum) a test kit that allows you to test for chlorine, pH and total alkalinity. Test kits are also available to test calcium hardness, stabilizer, and lots of other things.

Your Pinch A Penny expert can help you select the test kit that's right for you, to help you keep track of your pool's health in between your free water analyses at Pinch A Penny. Remember to store your test kit in a cool, dark place and replace your test kit reagents annually. Just date the bottles when you buy the kit and be sure to bring them into Pinch A Penny after a year for replacement.

Now that you know what a test kit is, here's how to use it to your advantage. First, each time try to perform your water test at the same time of the day and before you add any chemicals. During summer months, a test every day can help avoid the problems associated with heavy pool use or rain.

Testing the
waters. Here's
the proper
way to get a
water sample.



To get the best results, after the pump has been running for at least one hour, take water from the deep end of your pool, submerging your collection vessel upside down up to your elbow before filling. Put your water sample into the appropriate tubes and follow the directions for adding specified solutions (usually just a few drops) to the appropriate tube. Changes in water color will tell you the chemistry levels.

Test Strips

Test strips, the easiest method for pool and spa water testing, are fast and simple to use because they eliminate the need to measure samples and count drops. Typically, you simply dip a strip in the water for one second and then remove it. You then compare the color on the strip to a color chart provided to get the results.

Test strips are comparable in accuracy to liquid kits. In fact, many believe they actually deliver greater accuracy than liquid kits because they are more user-friendly and easier to utilize for reliable results. Many local and state health departments now recognize test strips as an approved testing method. This means that professional pool and spa service technicians, as well as other industry experts, trust the accuracy of pool and spa test strips. Test strips are available to measure all of the critical water parameters such as chlorine, pH, total alkalinity, hardness, cyanuric acid and much more.



Free 7 Point Water Test

Even though you test your water at home, you should always follow up your own readings with a free water analysis at Pinch A Penny every week or two. Using Pinch A Penny's 7-point free water test program, our experts can help spot a potential problem a home test kit can miss. And because we keep a history of your pool's condition each time we test it, we get to know your pool better each time you bring us a sample.

How to know just how much fun your pool holds.

Water testing and correcting potential problems can't be accurately done if you don't know how much water your pool holds. Plus, you can end up spending a lot more in chemical treatments in the long run. Here's a simple method for measuring the number of gallons in your pool. Once you have this figure, it's important to bring it in with you when you have your water analyzed.

First of all, you need to determine your average depth. The simplest method is to tie a string that's been marked off in feet to a weighted object and measure the deep end, then the shallow end. Add these two numbers together and divide by two to get your average depth. Use your average depth number in the following calculations to determine your pool's capacity:

For Rectangular Pools

Length x width x average depth x 7.5 = Total gallons.
Example: A pool that's 30 feet in length, 15 feet wide and has an average depth of 5 feet holds 16,875 gallons.

$$\leftarrow \text{FEET} \rightarrow \times \updownarrow \text{FEET} \times \updownarrow \text{FEET} \times 7.5$$

For Circular Pools

Diameter x diameter x average depth x 5.9 = Total gallons.
Example: A 18-foot round pool with an average depth of 5 feet holds 9,558 gallons.

$$\leftarrow \text{FEET} \rightarrow \times \updownarrow \text{FEET} \times \updownarrow \text{FEET} \times 5.9$$

For Oval Pools

Long diameter x short diameter x average depth x 5.9 = Total gallons.
Example: If the long diameter is 30 feet, the short diameter is 15 feet and the average depth is 6 feet, the pool holds 15,930 gallons.

$$\leftarrow \text{FEET} \rightarrow \times \updownarrow \text{FEET} \times \updownarrow \text{FEET} \times 5.9$$

For Irregular-Shaped Pools

It's best to consult the pool builder or ask your Pinch A Penny expert for assistance.



Chart your progress.

At the back of this publication are handy tables that clearly define just how much of a corrective chemical you need to add for a particular problem. Refer to them for the proper amount of chemicals to add for your pool size. Or better yet, bring a sample to Pinch A Penny. We'll explain exactly what's wrong, if anything, and how to fix it.

Keeping total alkalinity in check.

Ideal: 70 to 140 ppm

(Ideal range varies based on pool surface type)

To lower total alkalinity, add muriatic acid or Suncoast pH Minus to the deep end of the pool. To raise it, add Suncoast Total Alkalinity Increaser. Be sure to check your pH levels before and after raising or lowering the total alkalinity. You may need to adjust your pH levels again within two to three days of correcting a high or low total alkalinity.

Are pH readings a little wacky?

Ideal: 7.4 to 7.6

To raise your pH level, add Suncoast pH Plus to your pool. To lower pH, you can use either muriatic acid or Suncoast pH Minus. Remember to never adjust pH unless your total alkalinity is already in its ideal range. Most of the time, a wacky pH reading is due to wacky total alkalinity. When the alkalinity is adjusted to its proper range, the pH usually fixes itself within two to three days.

Be a softy for calcium hardness.

Ideal: 200 to 400 ppm

(Ideal range varies based on pool surface type)

To increase calcium content, add Suncoast Calcium Hardness. To decrease it, drain some water and then add fresh water to your pool. If you maintain a high calcium hardness level, you may need to add a weekly dose of Suncoast Metal Control to help reduce the chances of getting stains and scale.

Be a stabilizing influence.

Ideal: 40 to 100 ppm

Keep in mind that stabilizer helps your chlorine work more effectively, which saves you money in the long run. Low stabilizer readings can be elevated by adding Suncoast Stabilizer. High stabilizer readings can be lowered by adding fresh water to your pool. Also, if you use a chlorine alternative to sanitize your pool, you may not need stabilizer at all.

Diluting a problem with total dissolved solids.

Ideal: Under 3,000 ppm

This one's easy. Just add fresh water to your pool should your total dissolved solids readings exceed 3,000 ppm. Be sure to consult your Pinch A Penny expert first, because some pools operate just fine with high total dissolved solids.

Water Balance Guidelines

(Please consult with your builder for more specific ranges.)

Pool Surface/ppm	Marcite	Vinyl	Fiberglass	Painted	Tile	Exposed Aggregate
Total Chlorine/Bromine	2.0-4.0	2.0-4.0	2.0-4.0	2.0-4.0	2.0-4.0	2.0-4.0
Free Chlorine	2.0-4.0	2.0-4.0	2.0-4.0	2.0-4.0	2.0-4.0	2.0-4.0
Combined Chlorine	0	0	0	0	0	0
pH	7.4-7.6	7.4-7.6	7.4-7.6	7.4-7.6	7.4-7.6	7.4-7.6
Total Alkalinity	80-120	120-140	70-100	80-120	80-120	80-120
Calcium Hardness	250-400	200-300	250-400	250-400	200-400	200-400
Total Dissolved Solids	300-3000	300-3000	300-3000	300-3000	300-3000	300-3000
Iron	0	0	0	0	0	0
Copper	0	0	0	0	0	0
Stabilizer	40-100	40-100	40-100	40-100	40-100	40-100
Phosphate (ppb)	0-200	0-200	0-200	0-200	0-200	0-200

Chlorine Is Clearly The Best Way To Keep Your Pool Sanitary



While there are many types of chlorine, they all have several important things in common. First, chlorine is the most cost effective way to sanitize your pool. In fact, it's been the product of choice for more than 100 years. It's safe enough to sanitize drinking water, and powerful enough in the right concentrations to kill deadly bacteria, germs and viruses. Unlike chlorine alternatives, chlorine oxidizes while it sanitizes – helping to keep your pool crystal clear.

But why do I need chlorine?

Simple, because nothing purifies the water like chlorine. Wind, rain, dust and people introduce bacteria and algae into your pool, along with other contaminants. When enough chlorine is added to offset these unwanted introductions, your pool is said to have a "chlorine residual." This is what sanitizes your pool continuously.

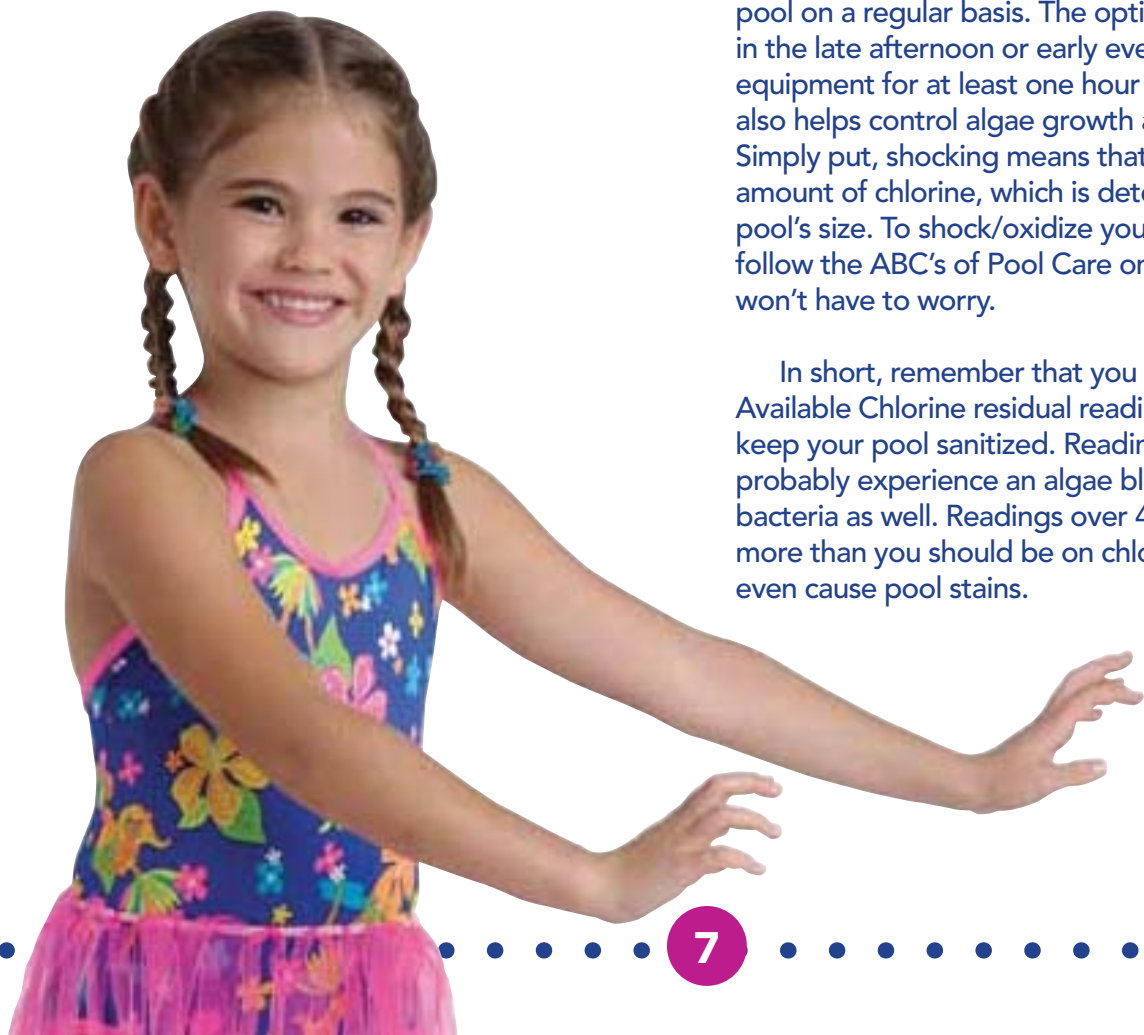
When it's time to shock your pool, go for the gold. Pinch A Penny's Suncoast Gold™ that is! Selling more liquid chlorine than any other pool company in the world, Pinch A Penny fills its chlorine jugs daily at each and every store, which means our chlorine is always fresher and fresher means stronger. When you use Suncoast Gold™, you can be certain that you are using the strongest most effective liquid chlorine available.

How do I test chlorine residual? Ideal: 2.0 to 4.0 ppm

The same way you test for other pool components – with a test kit. The best chlorine test kits give you readings for both Total Available Chlorine and Free Available Chlorine. Free Available Chlorine is the chlorine in your pool that still has sanitizing capabilities. Total Available Chlorine is the combination of both the Free Available Chlorine and the chloramines. Chloramine is the chlorine that has worked to kill algae or bacteria and has now become ineffective. Chloramines in your pool cause strong chlorine odors, burning eyes when swimming, and prevent your Free Available Chlorine from doing its job.

To get rid of chloramines and help keep them from ever becoming a problem, you should shock your pool on a regular basis. The optimal timing would be in the late afternoon or early evening, run your pool equipment for at least one hour after shocking. This also helps control algae growth at the same time. Simply put, shocking means that you add a large amount of chlorine, which is determined by your pool's size. To shock/oxidize your water quickly, just follow the ABC's of Pool Care on page 8 and you won't have to worry.

In short, remember that you must maintain a Free Available Chlorine residual reading of 2 to 4 ppm, to keep your pool sanitized. Readings under 2.0 – you'll probably experience an algae bloom and grow some bacteria as well. Readings over 4.0 – you're spending more than you should be on chlorine and you could even cause pool stains.



Is one type of chlorine better than another?



Each chlorine compound is designed for a specific purpose. Some can be useful for more than one application, while others have a very specific purpose. Each type has its own features and benefits.

It helps to understand that the term “chlorine” is often used inappropriately, even within this publication. But it has become a generic term for one of the world’s most common sanitizers. Real chlorine is only available in gaseous form. Solid chlorine is derived from this gas, and mixed with various chemicals which make it solid. Of this solid chlorine, there are two basic kinds, stabilized and unstabilized.

As you read on page three, stabilizer helps chlorine last longer in your pool. So why would you use anything else but stabilized chlorine? Simple, stabilized chlorine is the best for daily sanitizing, while unstabilized is best for shocking your pool each week – or giving it a large dose of chlorine to sanitize the water quickly. Even though the chlorine readings will be high for about 24 hours after your recommended weekly shocking, because you use an unstabilized form of chlorine, it will be okay to dive into the pool within a day.

The most important thing to remember is that chlorine is the best way to sanitize your pool. Stabilized chlorine lasts longer, and is the best for daily chlorination. Unstabilized chlorine is the best for shocking your pool weekly, because it provides a quick, high chlorine concentration that dissipates within about 24 hours. Please see chart on page 9 for an overview of the types of stabilized and unstabilized forms of chlorine Pinch A Penny offers.

When adding an algaecide to a pool, you should always add the algaecide during the daylight hours. The algae is like a flower, blooming during the day and closing at night. The algaecide will be much more effective when added during the day.

Maintaining The Perfect Pool Can Be As Easy As ABC

Okay, now we know what your pool water is made of, why it’s important to keep it properly sanitized and balanced, and how much water your pool holds.

Armed with this information, you can count on Pinch A Penny to help keep algae and bacteria from affecting your pool’s sparkle:

- A** Maintain your pool with Suncoast Stabilized Chlorine Tablets every day using an automatic chlorinator.
- B** Shock your pool once a week with Suncoast Gold™ Liquid Chlorinating Shock.
- C** 24 hours after shocking, add a dose of Suncoast All In One Algaecide.

We guarantee this simple formula will keep your pool algae-free if you follow it diligently.



Pinch A Penny Has All Types Of Chlorine For All Types Of Pools

Stabilized Chlorine: The Best & Strongest Types of Chlorine Available for Daily Chlorination. All Offer 90% Available Chlorine.

Product	Description	Packaging
Large 3" Stabilized Chlorinating Tablets	This is the most common kind used in the pool industry. It's great for daily chlorination when used in standard automatic chlorinators and floating chlorinators, and provides the highest strength of available chlorine possible.	
Small 1" Stabilized Chlorinating Tablets	Only 1" in diameter, these are most often used in specially-designed cartridges that fit certain styles of automatic chlorinators. Provides the highest strength of available chlorine possible.	
Chlorine Cartridges	Typically there are two different kinds, both containing 1" tablets. One is a "universal" cartridge for use in many types of automatic feeders. The second is a floating chlorine cartridge which gives you the same benefits, but is completely disposable once the chlorine is used up.	
3" Tornado Tab	The 1 lb. Tornado Tab offers the same sanitizing power as the other products listed above, but is specifically designed for certain styles of automatic feeders.	
Sticks	Sticks fit into certain types of automatic chlorinators better, but they are the same chemical as all the others listed above.	
Granular Pool Chlorinator	Suncoast Chlorine is the freshest available! That means it dissolves correctly and maintains the proper free chlorine levels to keep your pool its healthiest. Super Concentrated, residue free and fast dissolving granular. Guaranteed 99.5% pure, provides 56% available stabilized chlorine.	
Unstabilized Chlorine: Our Freshest & Strongest Chlorine for Weekly Shocking		
Liquid Chlorine	It's the most popular, least expensive, and most effective type of unstabilized chlorine. We offer the freshest and strongest liquid chlorine in refillable, 2.5 gallon containers. It's the best for shocking, and helpful with algae control.	
4 Way Granular Super Chlorinating Shock	Super powerful calcium hypochlorite shock. Fast dissolving formula kills bacteria, controls algae, destroys organic contaminants and restores clarity.	

What's the story on automatic chlorinators?

Automatic chlorinators are not only an ideal way to deliver just the right amount of chlorine to keep your water clear, but they save you time as well. Because automatic chlorinators can be adjusted to give out the exact amount of chlorine needed on a daily basis and can hold from two to eight weeks worth of chlorine, you can count on them to keep your pool's health in check around the clock.

There are three basic types of automatic chlorinators – floating, off-line erosion and in-line erosion. Here's a quick look at each:



Floating Chlorinators, as the name implies, float on the surface of the water which slowly dissolves the chlorine inside. This is the simplest and least expensive type.



Off-line Erosion Chlorinators tap into the return lines and deliver just the right amount of chlorine from chlorine tablets inside.



In-line Erosion Chlorinators are tanks or cylinders that are plumbed directly into your pool's return lines. Water flowing through the tank or cylinder slowly dissolves the chlorine tablets.

What About Chlorine Alternatives?

Chlorine has not only been the safest, most economical sanitizer for a century, it's also given us worry-free drinking water. Unlike chlorine alternatives, you can trust chlorine to kill molds and algae, work at all water temperatures, keep all types of pools clean and clear, and cost six to ten times less than its alternatives. It's approved in all states, and is the most economical way to maintain a healthy swimming environment.

However, chlorine alternatives have come a long way in the last ten years. Today, there are many mineral-based and chemical systems available. Bear in mind, even when using a chlorine alternative system, you also need a chemical oxidizer like chlorine to eliminate organic materials in the water. If you decide to use a chlorine alternative, you can trust your Pinch A Penny expert to point you in the right direction.



The Revacil® Program. An effective chlorine-free treatment.

Revacil is a biguanide-based, chlorine-free sanitizer and algistat. The entire program includes a sanitizer, algae inhibitor and shock treatment. You can convert a chlorine pool to a Revacil program in a short period of time, however, converting back to chlorine requires following careful instructions. A messy reaction can occur if chlorine mixes with leftover biguanide.

Chlorine Generators

Chlorine generators (sometimes called salt generators), produce chlorine from a mixture of salt and water.

The in-line chlorine generator system produces chlorine directly into the pool from salt added to the pool water. The cell has a number of metal plates that are electrically charged by a power supply. Depending on the unit and manufacturer, you will maintain a salt level of anywhere between 3000-6000 parts per million in the water for the in-line system to work properly. While this may seem like a high salt content, your pool won't be like the ocean. By comparison, typical sea water has a salt level of 35,000 ppm.



Nature2® is a natural option.

Nature2, a natural mineral purifier for pools and spas, cuts chlorine use up to 80 percent. Using a patented mineral process, Nature2 uses water flow to direct pool water through a cartridge that contains a patented, coated ceramic mineral bed. It uses no electricity, has no moving parts. Nature2 helps prevent growth of new bacteria and algae by releasing trace amounts of metals, usually silver and copper, into the water, which kills algae and bacteria.



Hayward
SwimPure



Aqua Rite



Resilience
300PS



Pentair
Intellichlor

Salt Pools

While the phrase “saltwater pools” may bring to mind sand, waves and jellyfish, in reality, this alternative to standard chlorinated pools isn’t really like the beach at all. The water in the ocean has a salt content of about 35,000 ppm, while the water in a saltwater pool has a far lower concentration of salt at around 3,000 – 6,000 ppm. The water in a saltwater pool is actually more like a saline solution, which contains about 6,000 ppm. This means that if your pool is properly maintained, it shouldn’t taste or smell salty at all. Saltwater pools can be found both in the United States and in other countries. Saltwater pools are not chlorine-free pools. The saltwater system is actually just an alternative method of chlorinating a pool, making your own chlorine daily.

Salt Pool Myths: Take them with a grain of salt.

The most common myth regarding salt pools is that they are sanitized by salt and a better choice, if you have sensitivities or allergies to chlorine. Salt pools are, in fact, sanitized using chlorine. A salt-chlorine generator separates the chlorine and sodium molecules in salt and reintroduces them into the pool water. It is the chlorine that sanitizes your pool!

Another misconception is that salt pools do not require other chemicals. This is completely false and not using other chemicals could damage your pool or be potentially harmful. It is critical that a salt pool still maintain a proper pH, Total Alkalinity, Calcium Hardness and Stabilizer levels. There is no magic inside a salt-chlorine generator that balances pool water. These parameters should be checked and balanced regularly.

Additionally, salt pools need to be shocked on a regular basis and salt-chlorine generators typically do not have the ability to effectively shock your pool. All pools, no matter what the sanitizer, need to be shocked regularly – preferably once per week during warm weather. Organic contaminants will build up in every pool and can only be elimi-

nated by shocking. For chlorinated pools, this is usually done with Liquid Chlorine/Bleach. A proper super-chlorination/shock requires elevating the available chlorine level to approximately 10.0 ppm above the normal level of approximately 2.0 ppm. Even though some salt-chlorine generators feature an option to shock, they typically cannot produce enough chlorine to achieve an available chlorine level of 12.0 ppm. Maintaining a healthy salt pool still requires the purchase of regular shock treatments.

The last myth is that salt pools save money. Salt-chlorinated pools are actually more costly to maintain than pools chlorinated with tablets. You must factor in the cost of the salt-chlorine generator, ongoing salt purchases and replacement of the salt cell every five years on average. Although there may not be monetary advantages to having a salt pool, some have said the maintenance is easier and that the water does feel “softer”.

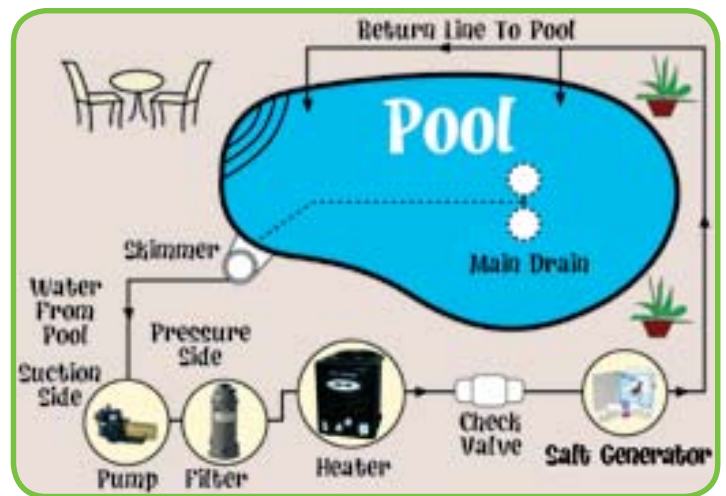
Converting a standard pool to a saltwater pool.

If you already have a pool, you can convert your standard pool to a salt pool. Two components will be added to your existing system, a salt cell and a control unit. The salt cell is attached to the pipes between your filter and water outlet and the control unit allows you to monitor the salt cell. The price for a salt system will vary based on features and brands. Check with your local Pinch A Penny expert for the latest products and pricing.



How does the system work?

Essentially, a saltwater pool works the same way as any other pool. There are still filters, pumps and drains. However, instead of adding chlorine tablets to your pool, the "salt-chlorine generator" actually creates the chlorine and adds it to the pool automatically. Salt is made up of two elements, chlorine and sodium, thus its scientific name - sodium chloride. Therefore, salt already has chlorine in it naturally. A salt-chlorine generator uses the simple process of electrolysis in combination with the water to separate the chlorine and sodium molecules and then reintroduces them into the pool.



To get a salt reading of 3000ppm, 250 lbs of salt should be added for every 10,000 gallons of swimming pool water.

How to increase salt content in your pool.

Desired increase in PPM	Gallons						
	1,000	5,000	10,000	15,000	20,000	25,000	50,000
100	0.8 lbs.	4.2 lbs.	8 lbs.	13 lbs.	17 lbs.	21 lbs.	42 lbs.
250	2 lbs.	10 lbs.	21 lbs.	31 lbs.	42 lbs.	52 lbs.	104 lbs.
500	4 lbs.	21 lbs.	42 lbs.	62 lbs.	83 lbs.	104 lbs.	208 lbs.
1000	8 lbs.	42 lbs.	83 lbs.	125 lbs.	167 lbs.	208 lbs.	417 lbs.
3000	25 lbs.	125 lbs.	250 lbs.	375 lbs.	500 lbs.	750 lbs.	1500 lbs.
6000	50 lbs.	250 lbs.	500 lbs.	750 lbs.	1000 lbs.	1250 lbs.	2500 lbs.

Please check with your specific manufacturer's recommendations and adjust the level to meet their specifications.

Salinity Salt & More

Specially Formulated

Pool Salt

40 lb.

40 Lb. Pool Salt and Premium Blend Salt with fine granulation and stain inhibitor. (Contains no YPS).



Stain Control

1 qt.

In addition to removing metals from the water, Salinity Stain Control helps keep silica in the solution and helps prevent scaling of the salt generator cells.



Cell Cleaner

1 qt.

This acid-based product was formulated to remove calcium build-up which can inhibit the performance of salt generator cells. The formula is pre-mixed and ready to use.



Pool Products Made for Salt Pools.



Multi-Purpose Algaecide

1 qt.

This product kills all types of algae including mustard, green and black. It also clears the water without foaming or requiring the closing of your pool.



Phosphate Remover

1 qt.

This concentrated formula helps eliminate algae's primary nutrient, phosphate. If your salt water pool is experiencing a recurring algae bloom not controlled by algaecide and your salt-chlorine generator, this may be your solution!

Oxidizing Shock

2.2 lbs.

This powerful oxygen-based shock works hard to oxidize and destroy the contaminants and chloramines that can cause cloudy water, unpleasant chlorine odor and skin or eye irritation. Its unique formula allows swimming after 15 minutes.



Natural Clarifier

1 qt.

A superior clarifier which clears up cloudy water also helps prevent stains and eliminates oil and scum build-up on salt generator cells. Your salt system will run cleaner, longer and perform better.



ABC's of Salt Pool Care

A

Add Salinity Complete Salt Blend to maintain the proper salt level in your pool.

B

Shock your pool by adding Salinity Oxidizing Shock.

C

12 hours after shocking, add a dose of Salinity Multi-Purpose Algaecide.

How To Make A Clean Sweep



Tips for cleaning your pool.

It's easy to establish a cleaning routine that you can do while you're enjoying a cool dip. First, you'll need a pool skimmer, pumice stone or tile brush, pool wall brush, vacuum head and hose, and telescopic pole. Then follow these simple steps, and your pool will reward your efforts with debris-free swimming.

- 1) Skim the surface for floating leaves and debris. Once they sink, they're a lot harder to remove and may also stain the pool surfaces.
- 2) Scrub scale away along the water line. A pumice stone or tile brush should be used for tiled areas. If using a pumice stone, be sure to keep it wet to avoid scratching your tile.
- 3) Empty your skimmer and pump baskets.
- 4) Unless you have an automatic pool cleaner, you need to manually vacuum your pool.

First, attach the vacuum head to a telescopic pole and the hose to the vacuum head. Slowly lower it into the pool. When it reaches the bottom, continue to feed the hose into the pool until all the air has been purged from the hose. If you connect the hose to your pump with air still in it, it can burn out your swimming pool pump.

Once all the air has been removed from the hose, pass the end of the hose through the skimmer door and plug it into the vacuum port. Turn on the pump to start the vacuum's suction. Also, make sure the vacuum inlet is the only open line to the pump. Vacuum like you would sweep your carpet, starting at the shallow end and working your way into the deep end with long, slow, sweeping strokes.

- 5) Brush the pool's sides and floor. Simply take an 18" nylon or poly-bristle brush and move dirt toward the drain. Start on the walls at the shallow end, working your way to the deep end with long, slow, sweeping strokes.
- 6) Once finished, wash all your pool cleaning tools with fresh water and store them out of the sun. The sun's rays and the chemicals in the pool water can make them deteriorate a lot quicker.
- 7) Backwash or clean your filter after sweeping and vacuuming. Your Pinch A Penny expert can tell you just how to maintain your particular pump and filter.
- 8) Repeat Step #3.
- 9) If your water level is low, add water. But don't forget that you've got water running and flood the area. Also, don't use softened water because it will cause corrosion and rapid chlorine loss.

Other helpful cleaning aids.

If you have a pool that's near trees, we don't need to tell you about leaf litter. Try a Leaf Vacuum, which is a large mesh bag on a plastic base with wheels that connects to a garden hose. Water pressure blows the leaves into the bag and prevents them from clogging your vacuum and plumbing.



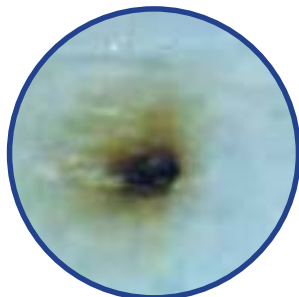
Automatic pool cleaners are also a time and work saver. Many models eliminate up to 90% of manual cleaning. Pinch A Penny has the largest selection of both in-ground pool and above-ground pool automatic cleaners to fit all pool care needs. Again, ask your Pinch A Penny expert for the style and type that's best for your pool.

We carry all major brands of pool cleaners.

HAYWARD



Only Pinch A Penny Can Help You Spot The Right Stain Removal Solution



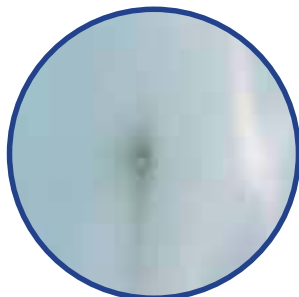
Rust Stain

Several conditions can lead to pool staining, like acidic water, alkaline water, leaves, algae or metal objects left in the pool. But it's often difficult to pinpoint the cause of the stain, which can be a combination of several factors.



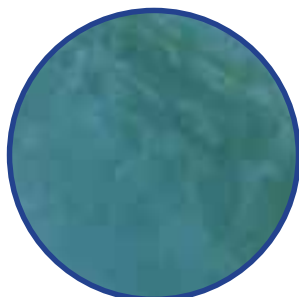
Iron Stain

That's why you need to trust your Pinch A Penny expert to help you pinpoint the cause, then offer a solution. We're the only pool care store that has the products you need to clean up even the ugliest-looking stains.



Cobalt Spot

With our exclusive, new, proven stain treatment program, we can not only help you pinpoint the cause of most stains, but help you treat them effectively. Just remember, stains in your pool are like stains on clothing. With the right advice and right product, you can get just about anything out.



Copper Scale

Pinch A Penny's Stain IDentification Kit takes the guesswork out of stain removal.

Now, all you need to do is have your water tested, make sure your pool is balanced, then test the stain using our Stain IDentification Kit. With this first step, you'll know exactly which stain removal product will work best on your particular stain—which is just the kind of help you'd expect from the pool care experts at Pinch A Penny.



Once you pinpoint the right treatment, you can then proceed with the cleanup using proven Suncoast products like Super Metal Control, Ultimate Metal Control, Stop Stains or Iron & Cobalt Stain Remover. All of these treatments are effective and a lot more cost efficient than draining and acid washing your pool.



What Do I Do Now?

An at-a-glance look at how to fix what ails your pool.

Problem	Possible Cause	Solution
Water is Cloudy, Smoky Or Hazy	<ul style="list-style-type: none"> • Poor circulation or filtration. • Improper water balance. • High Total Dissolved Solids (TDS) and/or Calcium Hardness. • Excess organic waste. • High Total Alkalinity. • Low sanitizer level. 	<ul style="list-style-type: none"> • Back-wash and clean filter. Clean skimmer baskets and pump strainer basket. Filter may need chemical cleaning. • Test pH, Total Alkalinity and Calcium Hardness. Adjust if necessary. • If one or both are high, TDS over 3,000 ppm or Calcium Hardness over 400 ppm, drain off 1/3 to 1/2 of your pool water and replace with fresh water. Then adjust chemical balance. • Shock with 1 gallon liquid chlorine for every 10,000 gallons of pool water. • Add Muriatic Acid or Suncoast pH Minus • Add chlorine to bring it to its proper range.
Water Is Green	<ul style="list-style-type: none"> • Green algae growth, a free-floating variety which imparts a cloudy green color to the water. It's easy to correct if treated early. • Low Total Alkalinity. 	<ul style="list-style-type: none"> • Shock pool and add Stop Yellow, Stop Green, Super Green Algaecide killer, or All In One Algaecide. • Add Suncoast Total Alkalinity Increaser.
Yellow Or Green Dust On Floor And Walls	<ul style="list-style-type: none"> • Mustard algae. 	<ul style="list-style-type: none"> • Shock pool and add Suncoast Stop Yellow.
Black Spots On Floor And Walls	<ul style="list-style-type: none"> • Black algae, a very resistant, hard-to-kill variety which appears as small, black dots or blotches that are pin-head to quarter-sized on the walls and bottom of the pool. 	<ul style="list-style-type: none"> • Suncoast Super Black Algaecide is the finest product on the market for the treatment of black algae. If Metal Control is used in conjunction with Suncoast Super Black Algaecide, even the most severe problems can be eliminated faster. You need to brush the spots to remove them after chemical treatment.
Pink Slime	<ul style="list-style-type: none"> • Pink Slime is a form of bacteria with a pinkish center that's surrounded by a flat gelatinous mass. This bacteria can usually be tracked to some swimmer who has recently visited a coastal area where this type of growth is common. 	<ul style="list-style-type: none"> • Double shock the pool with 2 gallons of liquid chlorine per 10,000 gallons of pool water. After 48 hours, use Suncoast All In One Algaecide at twice the recommended rate for visible algae.

What Do I Do Now?

An at-a-glance look at how to fix what ails your pool.

Problem	Possible Cause	Solution
Water is Sudsy	<ul style="list-style-type: none"> • Overuse of some types of algaecides. 	<ul style="list-style-type: none"> • Discontinue use of current algaecide and switch to a high-quality, non-foaming one such as Suncoast All In One Algaecide. You may want to replace some of the pool water with fresh water and/or use Suncoast Stop Foam.
Water Burns Eyes	<ul style="list-style-type: none"> • Low or high pH. • Excessive organic wastes. • Too much sanitizer. 	<ul style="list-style-type: none"> • Check pH and adjust to 7.4 - 7.6 range. • Shock with 1 gallon liquid chlorine for every 10,000 gallons of pool water. • Check automatic chlorinator setting.
Water Tastes Salty	<ul style="list-style-type: none"> • High Total Dissolved Solids (TDS), 	<ul style="list-style-type: none"> • Drain 1/2 water in the pool and replace with fresh water.
Blonde Hair Turns Green	<ul style="list-style-type: none"> • Usually occurs in natural blondes or blonde children between the ages of 6 and 13, because of the amount of time they spend in the water. Also, certain forms of copper at concentrations of 1 or 2 ppm, like those found in some algaecides, can turn hair green. 	<ul style="list-style-type: none"> • If the problem is due to reaction with a copper, consider a special shampoo. Shampoos, like those containing aloe vera or anti-chlorine shampoos, are available to neutralize the chlorine reaction. If copper is your problem, add a sequestering agent to disable the copper minerals in water.
Chlorine Test Turns Orange	<ul style="list-style-type: none"> • Pool water has a very high chlorine content, above 4 ppm. 	<ul style="list-style-type: none"> • Discontinue using chlorine until chlorine returns to normal, or use a chlorine neutralizer.
pH Test Looks Purple Or Blue	<ul style="list-style-type: none"> • Very high chlorine content. 	<ul style="list-style-type: none"> • Neutralize chlorine and retest.
pH Always Tests Too High	<ul style="list-style-type: none"> • High Total Alkalinity. 	<ul style="list-style-type: none"> • Add Muriatic Acid regularly.
pH Always Too Low	<ul style="list-style-type: none"> • Total Alkalinity is too low. • Use of Tri-chlor or other low pH disinfectants. 	<ul style="list-style-type: none"> • Add Suncoast Total Alkalinity Increaser. • Use Suncoast pH Plus.

**PINCH·A·PENNY
POOL·PATIO·SPA**

The Perfect People For A Perfect Pool

Keep your pool its
bluest
and keep
your
family
in the
pink.



Make sure the only thing swimming in your pool is your kids! The best way is to use our full line of quality Suncoast products, available at Pinch A Penny. They help you keep your pool its cleanest, your water its clearest, and your family its healthiest. Plus, you can trust Pinch A Penny to give you the right advice, along with the right products, to keep your pool sparkling and your family smiling. So arm yourself with Suncoast pool and spa chemicals. They're clearly the best way to keep your pool its bluest.

.....
For the store nearest you call 1-800-234-1616,
or visit our website at www.pinchapenny.com.

©2009 Pinch A Penny, Inc.

Pinch A Penny's Suncoast family of products are clearly superior for any pool care need.



Sanitizing Chemicals

Our wide variety of chlorine and bromine products are proven to perform beautifully for daily sanitizing or weekly shocking. Suncoast sanitizers are the best your money can buy.

Balancing Chemicals

Suncoast offers just the right products to balance your pH, total alkalinity, calcium hardness, and stabilizer. Keep your pool in perfect balance with Suncoast.



Stain Fighters

Stains can make even the clearest pool look a little dirty. Trust our complete line of stain fighters to help remove any pool stain, and help keep it from coming back.



Algaecides

From our All In One Algaecide, which is perfect for removing and preventing all types of algae, to our tough Super Green and Super Black, Suncoast can help you tackle algae and keep these hearty little plants from thriving in your pool.

Be sure to ask your Pinch A Penny expert about our other high quality specialty chemicals, including Suncoast's full line of spa chemicals, filter cleaners, tile cleaners, oil & scum removers, clarifiers and flocculants.

Pump It Up

The life-support system of any pool is the pump and filter. In some cases, this also includes a pool heater, automatic cleaner or automatic chlorinator. Proper preventive maintenance will keep them performing for years to come.

The basic pump types

Self-Priming Pumps

These have hair and lint strainers that act as reservoirs to help prime the pump. Self-priming pumps are generally used for in-ground pools, but are sometimes used in above-ground pools as well. With these types of pumps, it's important to keep the hair and lint strainers clean.



Self-Priming Pump

Flooded Suction Pumps

Flooded suction pumps can only be used with above-ground pools, because they need to be located beneath a pool's water level. They typically look like self-priming pumps, but are generally slightly smaller. Additionally, flooded suction pumps do not have a diffuser inside that allows the pump to prime itself.



Flooded Suction Pump

Booster Pumps

These are used in conjunction with self-priming pumps when increased pressure or flow is needed, as with certain types of automatic pool cleaners. Booster pumps are not self-priming, so they should not be used without the water supply coming from the primary pump.



Booster Pump

Tips for keeping it pumping.

Ventilation and protection from the weather is crucial with any type of pump. Consider a motor cover to provide shelter and still allow for good ventilation. The cooler the pump runs and the more protection you give it from chemicals and the elements, the longer it will last.

Be sure to keep all strainer baskets clean and securely in place. Also, check for water leaks between the pump housing and motor. A leak may indicate a bad shaft seal, which can be replaced by your Pinch A Penny expert.

How long should I run my pump?

That depends on several factors, including the size of your pool, weather conditions, the amount of activity in your pool, the time of year, and what kind of equipment you have. As a general recommendation, run your pump from 9 a.m. until dusk every day. As the days shorten in the winter, your pump will run less. This conveniently coincides with less swimming activity in colder months, unless, of course, you have a heating system. If you are correcting an algae, clarity, or circulation problem, run your equipment in the evening as well to keep the water circulating. Better yet, ask us what we recommend to achieve the best results for your situation.

Some Great Information To Filter Through



Your filter is your last line of defense in trapping debris on a constant basis. That's why it's so important to use the right type and keep it operating as cleanly as possible.

Sand Filters

This is basically a big canister of sand that helps trap smaller dirt and debris as water is forced through it. There are two types of sand filters used for pools. The most common is the high-rate sand filter, which uses sand as a filter medium. The other is called a rapid-rate sand filter, which needs layers of rock and gravel as a support for a top layer of sand.

As water passes through the sand bed, dirt and debris are trapped by sand grains. Sand filters use what's known as No. 20-grade silica sand, which is capable of trapping teeny-weenie 25- to 30-micron sized particles. (A micron is one millionth of a meter). Most sand filters have lateral tubes in the bottom of the tank instead of a solid underdrain. When filling a sand filter with sand, fill the empty tank with water about 1/3 of the way up first. This will help absorb the shock of the sand going into the tank.



Sand Filter

Cartridge Filters

Cartridge filters use replaceable paper or fabric-like pleated cartridges as their filter medium. Cartridges have a large surface volume to catch whatever the water pushes through them, and can trap 10- to 14-micron sized particles. Depending on the style you choose, a cartridge filter may have one or more cartridges inside the tank.



Cartridge Filter

Diatomaceous Earth (or DE) Filters

Diatomaceous Earth, which is composed of the skeletons of microscopic sea creatures, is the most effective, but also the most complex. DE filters not only remove the smallest particles (1 to 5 microns) of any filter, they actually sort of "polish" the water as it passes through it.



DE Filter

DE filters work by forcing water through the diatomaceous earth, then through a grid and back to your pool.

These upright cylinder tanks have long half-moon, rectangular-shaped grids or fingers. A spreader, which is connected to a collector or manifold, separates these grids and holds them in place. Water flows into the tank, passes through the diatomaceous earth, through the filter grids, into the manifold and back into the pool.

Because the diatomaceous earth powder performs the actual filtering in both vertical and spin filters, you should never run water through a DE filter without diatomaceous earth in it for more than 1 1/2 minutes. This can permanently damage the grid.

Keeping filters clean.

First, you have to know when your filter needs cleaning. Take note of the pressure gauge on the filter. When it goes up to 10 pounds per square inch (PSI) above its normal operating level, it's usually a good time to clean your filter.

Here's how to clean specific filter types:

Sand Filters

Reverse the flow of water by turning your regulator valve at the top of the tank to backwash. The backwash cycle should last until water passing through the site glass looks clean. Then turn the valve to the rinse position, and run this cycle for at least 30 seconds. When the filter is very dirty, it is good to repeat the process two or three times. Never turn the valve while the pump is running.



Cartridge Filters

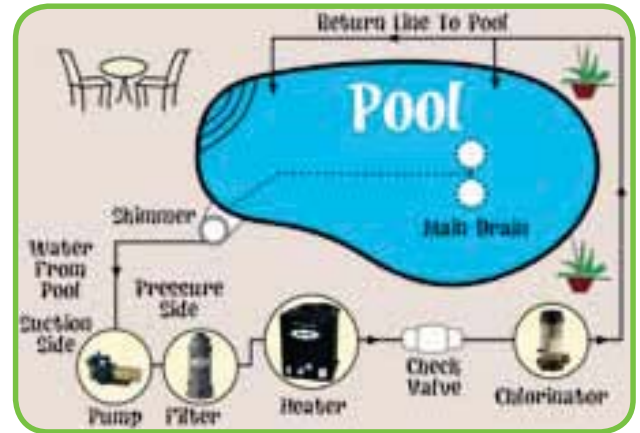
Unlike sand or DE filters, cartridge filters cannot be backwashed, and cartridges must be removed for cleaning. But the good news is cartridge filters are a breeze to clean. Simply remove the cartridge from the tank (with the pump off), take it out, hose it off, and soak it in Pinch A Penny's Filter Renew or Filter Clean for eight hours (or overnight). After soaking, spray and rinse it for about five to six minutes and put it back into the tank. We recommend keeping two cartridges so that you always have a clean one on hand while the other is soaking.

DE Filters

Clean your DE filter as you would a sand filter. But be sure to add new Diatomaceous Earth powder after each backwashing. To do this, mix DE powder in a bucket of water until it has a milky consistency, then slowly pour it through the skimmer while the pump is running. At the beginning of each season, disassemble the filter completely and clean the grids with Suncoast Filter Clean.

How Your Pool Works

How your pool works is pretty simple, really. Water is drawn from your pool into equipment that filters out debris and often adds sanitizer or even heats it and returns it to your pool with the sparkle you're looking for.



These simple tasks can make keeping a healthy pool routine.

To keep your pool it's healthiest, follow these easy pool care duties and you'll find keeping a perfect pool is one of your easiest household chores.

- ✓ Test your water chemistry daily. Take a water sample from the deep end of the pool, about 18" below the surface, with the pump running for one hour before the test. Bring it to Pinch A Penny for a computer analysis weekly.
- ✓ Use a skimmer net to remove floating leaves and other debris as needed. (As you're swimming or lounging poolside, notice if the water level is at the right height, about midway up the skimmer. If not, add water.)
- ✓ Brush the tiles (sides) every one to two weeks to stop a ring from forming on the tile.
- ✓ Check and empty the skimmer and pump baskets at least once a week.
- ✓ Run your pool pump from 9 a.m. to dusk daily, unless pool water looks cloudy. Then run it continuously, and be sure to have your water computer analyzed at Pinch A Penny.
- ✓ Check your filter pressure weekly. If it's 10 psi above the normal level, clean your filter.
- ✓ Check to make sure you have enough chlorine in either your automatic or floating chlorinator weekly.
- ✓ Add chemicals to adjust pH, alkalinity, calcium hardness or stabilizer if required.
- ✓ Shock your pool once a week with fresh Pinch A Penny liquid chlorine.
- ✓ Add a maintenance dose of All In One Algaecide.
- ✓ Add a sequestering agent. Add a maintenance dose of Suncoast Super Metal Control once a month.

The Ins And Outs Of Above-Ground Pool Care



Covers, blankets, blanket reels, pumps, motors, filters and skimmers are also specifically designed for above-ground pools to help extend the life of both your liner and your pool. Even gas heating systems can be purchased so you can enjoy year-round swimming, but are much smaller than those you would use for an in-ground pool.

The basic rules that apply to water chemistry for in-ground pools apply to your above-ground pool. The water must stay balanced, you need to follow the ABC program to keep your pool its clearest and healthiest, and you should keep it free from debris. The biggest difference between caring for an above-ground vs. an in-ground pool is in the tools you use.

Liners

Let's start from the ground up with the liner. The thicker the liner, the more resistant it is to being punctured by stones, pool toys and general use. Liners come in all different shapes, sizes and patterns, including tile mosaics, marble looks and more. Be sure to ask your Pinch A Penny expert to help you choose the right replacement liner when the time comes.

Equip yourself with the right products, designed exclusively for above-ground pools.

For instance, just as you would never use a steel brush on a vinyl liner, you also shouldn't expect an in-ground automatic pool cleaner to work in your above-ground pool.

We carry a complete line of automatic pool cleaners just for above-ground pools.



Pump and Filter Combination Packs Designed Just for Above-Ground Pools

In addition, there are a myriad of entry systems to choose from, including in-pool steps, removable safety ladders and ladders that attach to decks. With the proper equipment, accessories, and maintenance routine, your above-ground pool will provide many years of enjoyment.



What Do I Do About This Mechanical Problem Now?

A handy reference on how to fix mechanical problems with your pool's equipment.

Problem	Possible Cause	Solution
Pump Won't Prime	<ul style="list-style-type: none"> • Faulty suction type chlorinators. • Filter severely clogged. • Impeller clogged with debris. • Faulty seal in pump lid gasket. • Pump lid not tight. 	<ul style="list-style-type: none"> • Check hoses and fittings for air leaks, and repair if necessary. Fill with water and start pump. • Clean and/or replace filter elements, sand or diatomaceous earth. • Clean or replace impeller (normal time for some pumps to prime is 2 to 5 minutes). • Replace gaskets and/or tighten bolts between motor and pump, or lid. • Tighten lid.
Water Leaks Between Pump And Motor	<ul style="list-style-type: none"> • Shaft seal or gaskets are worn. 	<ul style="list-style-type: none"> • Replace seal or gasket. Tighten bolts between pump and motor.
Motor Continually Makes Noise	<ul style="list-style-type: none"> • Worn bearings. 	<ul style="list-style-type: none"> • Replace bearings or replace motor.
Motor Gets Hot And Shuts Down	<ul style="list-style-type: none"> • Low voltage on 220 where one line has dropped. • Holes in motor to cooling fan blocked or fan damaged. 	<ul style="list-style-type: none"> • Repair line. • Clear holes or repair fan.
Motor Hums Or Buzzes, But Will Not Start	<ul style="list-style-type: none"> • Motor seized. • Faulty capacitor or switch. • Burned winding. 	<ul style="list-style-type: none"> • Clean, lubricate and unseize motor. Clean centrifugal switch contacts. • Replace capacitor or switch. • Rewind or replace motor.
Motor Starts Slowly	<ul style="list-style-type: none"> • Faulty capacitor. 	<ul style="list-style-type: none"> • Replace capacitor or motor.
Motor Completely Dead	<ul style="list-style-type: none"> • Burned up motor, wires burned. • Timer problem, breaker flipped. 	<ul style="list-style-type: none"> • Replace motor or wires. • Fix or replace timer, fix breaker.
Dirt Comes Back Into Pool	<ul style="list-style-type: none"> • Sand filter multi-port valve faulty. • Cartridge filter element allowing water over or under element, or tear in material. • Diatomaceous Earth filter with cracked manifolds or ripped or torn grids/fingers. 	<ul style="list-style-type: none"> • Fix spider gasket or other faulty parts in valve. • Replace element. • Replace parts or buy a new filter.

What Do I Do About This Mechanical Problem Now?

A handy reference on how to fix mechanical problems with your pool's equipment.

Problem	Possible Cause	Solution
Pressure Never Builds Up On Gauge	<ul style="list-style-type: none"> • Defective pressure gauge. • Sand filter not filtering due to over cleaning. • Clogged impeller veins. • Pump basket filled with debris. 	<ul style="list-style-type: none"> • Turn pump on and immediately turn off. If needle does not move, replace gauge. • Clean filter less often. • Remove impeller and clean. • Clean pump basket.
Filter Doesn't Seem To Clean Pool	<ul style="list-style-type: none"> • Defective filter, or filter too small 	<ul style="list-style-type: none"> • Replace defective parts or replace filter for pool.
Water Leaks Out Of Waste Line	<ul style="list-style-type: none"> • Sand filter multi-port spider gasket is worn. 	<ul style="list-style-type: none"> • Replace spider gasket.
Water Leaks Out Around Valve Handle On Multi-port Valve	<ul style="list-style-type: none"> • O-ring on shaft and/or shaft bearing defective. 	<ul style="list-style-type: none"> • Replace defective o-ring and/or shaft bearing.
Valve Handle On Multiport Is Hard To Turn	<ul style="list-style-type: none"> • Nylon bearing worn out or debris around shaft. 	<ul style="list-style-type: none"> • Replace bearing or clear debris.
Sand All Over Bottom Of Pool	<ul style="list-style-type: none"> • Broken lateral. 	<ul style="list-style-type: none"> • Replace lateral or filter.



Warm Up To Year-Round Fun

Hey, your pool is family fun central. So, why not enjoy it all year-round? It's easy to do with a pool heating system from Pinch A Penny. From heat pumps and gas heaters to solar panels and blankets, Pinch A Penny has all the equipment you need to keep the pool fun going and going and going. Best of all, only Pinch A Penny guarantees you the expert advice you need to choose the right type of pool heating system for your pool and your budget.

Pinch A Penny carries a wide variety of items you need to make the most of your pool including: pool heating systems, accessories, winter covers, solar covers, leaf nets and more.



Heat pumps and gas heaters: Hot sellers for lots of good reasons.

Want to keep your pool warm and inviting every day of the year? You want a top quality heat pump or gas heating system from Pinch A Penny. Both are tops in energy efficiency and designed to provide constant, and comfortable water temperatures day in and day out.



Heat Pumps



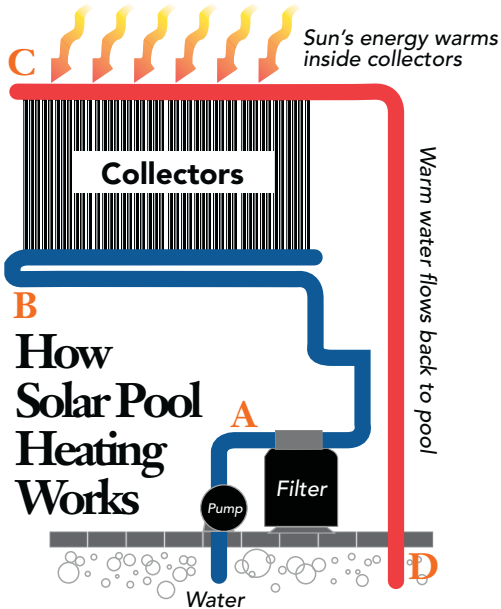
Gas Heaters

So, what's comfortable to you? Heating units are rated by units of measurement called BTU's. One BTU is capable of raising the temperature of one pound of water by one degree. So the larger your pool, the greater the required output in BTU's per hour. Most people find a pool water temperature between 78 and 82 degrees ideal, but you may like it cooler or warmer. That's where your Pinch A Penny expert comes in. Talk to him or her about your personal preferences, home design, and pool size and style for expert help in determining the proper heating system for you, starting with a free in-home pool heating analysis.



Solar heat: Sun power at work.

It's no surprise that the sun is a powerful source of heat. With a solar heating system, you can harness that power to keep your pool warmer and extend your swimming season. Naturally, a solar heating system is the most cost-effective pool heating system around because the power of the sun is free.



- A Using your existing pool pump, pool water is directed through a series of valves to your solar collectors.
- B Pool water enters the solar collectors at the bottom and rises to the top through the individual tubes of the collector.
- C As the water rises through the collector it is heated by the sun's radiant energy.
- D The water is then returned to your pool to repeat the cycle until your pool has been warmed by the sun.

Once installed, a solar heating system works by drawing heat through a panel either on the roof or at a 45° angle near the pool. Tubing filled with pool water runs through the panel, which heats the water then returns it back to your pool. If properly installed with advice from Pinch A Penny heating experts, a solar heating system can be very easy to maintain.

And Pinch A Penny can also offer you solar blankets and pool covers in a huge variety for all pool sizes to retain the warmth in your pool water overnight or during cool periods.



Winter Cover



Solar Blanket

Solar power. Chances are, it's the perfect solution to warming up your pool - and swimming earlier in the Spring and later in the Fall. Ask your Pinch A Penny expert for details.



Solar Rings

The Solar Sun Ring is an easy to use, passive solar pool heating device that works like a solar blanket. No reels to install-just place in your pool. Solar Ring now available for spas. One size fits most spas. To heat a 12' x 24' pool, manufacturer recommends using 6 discs.



Some Hot Tips On Caring For Your Spa

.....

There's nothing quite like slipping into a steamy spa to start the day or wash away tensions at day's end. A spa, just like any other cherished possession, requires periodic maintenance and upkeep to keep it at its best.

The most important thing to monitor when caring for your spa is water balance. But remember, spas are much different than swimming pools. Four people in a spa are equivalent to having 250 in an average-sized swimming pool. High temperatures and the ratio of people to water means more residual soaps, deodorants, perfumes, natural body oils and perspiration are released into spa water. This can create excessive organic contaminants, which can only be eliminated using products that are specially formulated for spas.

Understanding the chemistry of a healthy spa.

The biggest consideration is whether to use chlorine or bromine. Both are effective in daily sanitizing. However, chlorine breaks down faster at higher temperatures and can release a strong odor as it does. Bromine is typically the most popular way to sanitize spa water. No matter which one you choose, more is not better when using these chemicals. When you overload your spa, you're setting yourself up for equipment failure due to corrosion.

Chlorine: Ideal Range, 2.0-4.0 ppm

Proper chlorine levels are crucial. At the same time, proper pH, total alkalinity and calcium hardness levels must also be kept in check to insure that chlorine can do its job effectively. When not in balance, your water can become corrosive, and attack heating elements, pump seals and internal gas fired heaters.

Bromine: Ideal Range, 3.0-5.0 ppm

Bromine has become so popular because it is less harsh to the skin and works better than chlorine in hot water. Unlike chlorine, bromine is effective even after disinfecting. It's also more pH stable and easier to maintain in the proper level by using tablets in a floating dispenser. However, the same rules apply - pH, total alkalinity and calcium hardness must be kept in check to prevent corrosion to spa equipment.

Total Alkalinity: Ideal Range, 80-120 ppm

Total alkalinity is the spa water's ability to neutralize acid, and is an indicator of the water's ability to resist changes in pH. If readings are below 80 ppm, add Solus Spa pH Up until you're back in the acceptable range. If readings are above 120, add Solus Spa pH Down to get back in balance.

pH: Ideal Range, 7.2-7.6

Instead of measuring in parts per million, pH is read on a 14-point scale, with 7.2-7.6 being ideal for bathers. pH indicates how acidic or alkaline your spa water is. A pH reading below seven would be acidic, while eight or above would be alkaline. If readings are below 7.2, add Solus Spa pH Up. Readings above 7.6 can be brought back into check using Solus Spa pH Down.

Calcium Hardness: Ideal Range, 200-400 ppm

This is a measurement of the calcium and magnesium in your spa water. When levels are low, corrosion can occur and the water can get foamy. When levels are too high, scale can form and water becomes irritating to the skin and eyes. Low hardness can be corrected using Spa Calcium Hardness Plus.

Total Dissolved Solids (TDS): Ideal Level, 1,500 ppm

This is everything that gets dissolved into spa water, including metals, chemicals and salts. If TDS is too high, the water can become salty or have a tint to it. To decrease TDS, just add fresh water. Be sure to retest your spa water and check the overall water balance afterward.



The shocking truth about spas.

To maintain the perfectly balanced spa, you should shock after every use or at least once a week, whichever is more frequent. Unlike your pool, spas are shocked with a non-chlorine shock or oxidizer that eliminates odors and reduces irritating contaminants. Non-chlorine shocks are broken down in warm water as easily as liquid chlorine is in a swimming pool.

Sending spa myths down the drain.

Draining your pool is always a last resort, but it's a periodic necessity when caring for your spa. Chemical by-products and other contaminants quickly build up in spa water after continued use, and make the water more difficult to balance.

How often you drain your spa depends upon the size of the spa and number of bathers. If your spa sees a lot of use, drain it once a month. If use is infrequent, drain it every 3 months. Once you've refilled your spa, shock the water, run the pump to circulate the water for four hours, then retest and rebalance the water chemistry.

Acing spa water tests.

It's easy and painless. But you should do it often—at least twice a week all year round. First, check your test kit reagents. A good rule of thumb is to write the purchase date on the bottle and replace them after one year. After testing, be sure to clean your test vials thoroughly since residual chemicals can falsify future tests.

To get started, circulate the water before testing, then take a sample at least 12 inches below the surface. Read your results immediately. Remember - never use your fingers in place of a test vial cap because oil from your skin can skew results.

Test strips are also effective, but you should take the same precautions. Never put your fingers inside the container to remove the strips, and be sure to keep the container tightly closed and dry in between testing.



Pool Safety

Poolside fun and safety should always go hand in hand. That's why Pinch A Penny carries the widest assortment of pool safety products you'll find anywhere - everything from alarms and Coast Guard-approved buoys to pool and spa covers and life preservers. While nothing can replace adult supervision, these products will help you feel secure in the fact that you've made your pool a safe haven for the whole family.

We also offer a product that can be worn on a child's wrist. Should he or she fall into the pool, a loud alarm sounds at the base station.



Children's Wristband Alarm

We offer in-ground and above-ground alarms that hang over the side of the pool and sound an alarm if an object as light as 15 pounds falls in. We also offer door and gate alarms that will let you know if an entryway is opened by a little one, or if an entry has been left open by accident.

Whatever you need to make your pool its safest can be found at your neighborhood Pinch A Penny. Just ask one of our pool care experts which system is best for you.



Play It Safe!



Make safety a family affair.

While the safeguards listed on the previous page are crucial to pool safety, they are never a good substitute for supervision. Make sure your children follow the Buddy System and never swim without a partner. Here are some other important tips to follow:

- 1) No matter what the age of a child, adult supervision can help avoid injuries due to rough play or when children become tired.
- 2) Always maintain visual contact when children are swimming.
- 3) Get out of the water immediately if a storm approaches.
- 4) Keep a shepherd's crook (like lifeguards use) and hard foam life preserver nearby in case of emergency.
- 5) Use floating markers to indicate where shallow water begins to deepen.
- 6) Use depth markings to clearly indicate the depth of the water.
- 7) Make sure at least one family member is CPR certified.
- 8) Fence in any pool area, and keep gates locked.
- 9) We always recommend using pool, door and gate alarms to help provide an early warning of any unexpected entry into the pool. This is a simple additional safeguard to employ even if your pool has a safety barrier.
- 10) Keep your pool chemicals in a locked chemical storage area away from the water.
- 11) Keep a cordless phone with you poolside at all times.

Handle with care.

One of the most important, yet often overlooked things to remember about pool safety is how you handle chemicals. So here are some tips to help prevent chemical accidents:

- 1) When adding more than one chemical to your pool, always add them to the water separately. Mixing chemicals can result in dangerous reactions. Remember to always follow the label instructions on each chemical bottle, bucket or bag before use.
- 2) Keep chemicals out of children's reach.
- 3) Never overdose your pool. The theory that if a little is good, then a lot is better simply doesn't apply to pool care.
- 4) If instructed to mix a chemical in a bucket of water prior to adding it to your pool, always add the chemical to the bucket of water, not the other way around. Again, remember to follow the label instructions on each chemical bottle, bucket or bag before use.
- 5) Use a clean, dry scoop or measuring cup when measuring chemicals. Interchanging scoops or using a wet scoop can be dangerous.
- 6) Avoid breathing fumes or rubbing your eyes, nose or mouth when handling chemicals. When opening, turn your head away from the container.
- 7) When spills happen, clean them as soon as they occur and dispose of all chemicals safely. Most small spills can simply be diluted in pool water. Never, ever use a vacuum to clean up spills.
- 8) Don't smoke around chemicals. Some fumes and chemicals are highly flammable.
- 9) Store chemicals properly. Always keep them closed when not in use, as some are corrosive and should never be stored near metal items like bicycles, lawn mowers or cars.
- 10) The rules for handling biguanide-based chlorine alternatives are even more rigid than using chlorine itself. Be sure to read the packages and containers thoroughly before use.



Charting Your Progress

Here's what you do to raise or lower the chemical components of pool water and increase your family's fun.

GOAL	ADD	
Total Alkalinity (TA)	• Raise TA	• Suncoast Total Alkalinity Increaser
	• Lower TA	• Muriatic Acid or Suncoast pH Minus
pH	• Raise pH	• Suncoast pH Plus
	• Lower pH	• Muriatic Acid or Suncoast pH Minus
Calcium Hardness	• Raise Calcium Hardness	• Suncoast Calcium Hardness
	• Lower Calcium Hardness	• Dilute with Fresh Water or use Suncoast Metal Control
Total Dissolved Solids (TDS)	• Lower TDS	• Dilute with Fresh Water
Stabilizer	• Increase Stabilizer	• Suncoast Stabilizer/Conditioner
	• Decrease Stabilizer	• Dilute with Fresh Water

These handy tables let you know just how much chemicals to use when making adjustments.

It's simple. For instance, let's say your total alkalinity (TA) readings are a little low. Find the chart labeled How To Raise Total Alkalinity Using Suncoast Total Alkalinity Increaser. The ideal Total Alkalinity is 100 ppm, so if you're getting a reading of 80, you'd want to raise your TA 20 ppm. Find 20 ppm, go over to the appropriate gallons, say 20,000 and the chart will recommend that you add 5.6 lbs. of Suncoast Total Alkalinity Increaser.

Raise pH with base demand using Suncoast pH Plus

BASE DEMAND	GALLONS IN POOL					
	1,000	5,000	10,000	15,000	20,000	50,000
1	0.5 oz	2.6 oz	5.1 oz	7.7 oz	10.3 oz	1.6 lbs
2	1.0 oz	5.1 oz	10.3 oz	15.4 oz	1.3 lbs	3.2 lbs
3	1.5 oz	7.7 oz	15.4 oz	1.4 lbs	1.9 lbs	4.8 lbs
4	2.1 oz	10.3 oz	1.3 lbs	1.9 lbs	2.5 lbs	6.4 lbs
5	2.6 oz	12.8 oz	1.6 lbs	2.4 lbs	3.2 lbs	8.0 lbs
6	3.1 oz	15.4 oz	1.9 lbs	2.9 lbs	3.9 lbs	9.6 lbs
7	3.6 oz	1.1 lbs	2.2 lbs	3.4 lbs	4.5 lbs	11.2 lbs
8	4.1 oz	1.3 lbs	2.6 lbs	3.8 lbs	5.1 lbs	12.8 lbs
9	4.6 oz	1.4 lbs	2.9 lbs	4.3 lbs	5.8 lbs	14.4 lbs
10	5.1 oz	1.6 lbs	3.2 lbs	4.8 lbs	6.4 lbs	16.0 lbs

Lower pH with acid demand using Suncoast pH Minus

ACID DEMAND	GALLONS IN POOL					
	1,000	5,000	10,000	15,000	20,000	50,000
1	1.2 oz	6.2 oz	12.3 oz	1.2 lbs	1.5 lbs	3.9 lbs
2	2.5 oz	12.3 oz	1.5 lbs	2.3 lbs	3.1 lbs	7.7 lbs
3	3.7 oz	1.2 lbs	2.3 lbs	3.5 lbs	4.6 lbs	11.6 lbs
4	4.9 oz	1.6 lbs	3.1 lbs	4.6 lbs	6.7 lbs	15.4 lbs
5	6.2 oz	1.9 lbs	3.9 lbs	5.8 lbs	7.7 lbs	19.3 lbs
6	7.4 oz	2.3 lbs	4.6 lbs	6.9 lbs	9.2 lbs	23.1 lbs
7	8.6 oz	2.7 lbs	5.4 lbs	8.1 lbs	10.8 lbs	27.0 lbs
8	9.9 oz	3.1 lbs	6.2 lbs	9.2 lbs	12.3 lbs	30.8 lbs
9	11.1 oz	3.5 lbs	6.9 lbs	10.4 lbs	13.9 lbs	34.7 lbs
10	12.3 oz	3.9 lbs	7.7 lbs	11.6 lbs	15.4 lbs	38.5 lbs

Lower pH with acid demand using Muriatic Acid (20° Baume/31.45% hcl)

ACID DEMAND	GALLONS IN POOL					
	1,000	5,000	10,000	15,000	20,000	50,000
1	0.9 oz	4.6 oz	9.2 oz	13.7 oz	1.2 pts	1.4 qts
2	1.8 oz	9.2 oz	1.2 pts	1.7 pts	1.2 qts	2.9 qts
3	2.8 oz	13.7 oz	1.7 pts	1.3 qts	1.7 qts	1.1 gals
4	3.7 oz	1.2 pts	1.2 qts	1.7 qts	2.3 qts	1.4 gals
5	4.9 oz	1.4 pts	1.4 qts	2.1 qts	2.9 qts	1.8 gals
6	5.5 oz	1.7 pts	1.7 qts	2.6 qts	3.4 qts	2.2 gals
7	6.4 oz	1.0 qts	2.0 qts	3.0 qts	1.0 gals	2.5 gals
8	7.3 oz	1.2 qts	2.3 qts	3.4 qts	1.2 gals	2.9 gals
9	8.3 oz	1.3 qts	2.6 qts	3.9 qts	1.3 gals	3.2 gals
10	9.2 oz	1.4 qts	2.9 qts	1.1 gals	1.4 gals	3.6 gals

Raise total alkalinity using Suncoast Total Alkalinity Increaser

DESIRED INCREASE IN PPM	GALLONS IN POOL					
	1,000	5,000	10,000	15,000	20,000	50,000
10 ppm	2.2 oz	11.2 oz	1.4 lbs	2.1 lbs	2.8 lbs	7.0 lbs
20 ppm	4.5 oz	1.4 lbs	2.8 lbs	4.2 lbs	5.6 lbs	14.0 lbs
30 ppm	6.7 oz	2.1 lbs	4.2 lbs	6.3 lbs	8.4 lbs	21.0 lbs
40 ppm	9.0 oz	2.8 lbs	5.6 lbs	8.4 lbs	11.2 lbs	28.0 lbs
50 ppm	11.2 oz	3.5 lbs	7.0 lbs	10.5 lbs	14.0 lbs	35.0 lbs
60 ppm	13.4 oz	4.2 lbs	8.4 lbs	12.6 lbs	16.8 lbs	42.0 lbs
70 ppm	15.7 oz	4.9 lbs	9.8 lbs	14.7 lbs	19.6 lbs	49.0 lbs
80 ppm	1.1 lbs	5.6 lbs	11.2 lbs	16.8 lbs	22.4 lbs	56.0 lbs
90 ppm	1.3 lbs	6.3 lbs	12.6 lbs	18.9 lbs	25.2 lbs	63.0 lbs
100 ppm	1.4 lbs	7.0 lbs	14.0 lbs	21.0 lbs	28.0 lbs	70.0 lbs

How to lower total alkalinity using Suncoast pH Minus

DESIRED DECREASE IN PPM	GALLONS IN POOL					
	1,000	5,000	10,000	15,000	20,000	50,000
10 ppm	3.4 oz	1.1 lbs	2.2 lbs	3.2 lbs	4.3 lbs	10.7 lbs
20 ppm	6.9 oz	2.2 lbs	4.3 lbs	6.5 lbs	8.6 lbs	21.5 lbs
30 ppm	10.3 oz	3.2 lbs	6.5 lbs	9.7 lbs	12.9 lbs	32.2 lbs
40 ppm	13.7 oz	4.3 lbs	8.6 lbs	12.9 lbs	17.2 lbs	43.0 lbs
50 ppm	1.1 lbs	5.4 lbs	10.7 lbs	16.1 lbs	21.5 lbs	53.7 lbs
60 ppm	1.3 lbs	6.5 lbs	12.9 lbs	19.4 lbs	25.8 lbs	64.5 lbs
70 ppm	1.5 lbs	7.5 lbs	15.0 lbs	22.6 lbs	30.1 lbs	75.2 lbs
80 ppm	1.7 lbs	8.6 lbs	17.2 lbs	25.8 lbs	34.4 lbs	85.9 lbs
90 ppm	1.9 lbs	9.8 lbs	19.3 lbs	29.0 lbs	38.7 lbs	96.7 lbs
100 ppm	2.2 lbs	10.7 lbs	21.5 lbs	32.3 lbs	43.0 lbs	107 lbs

How to lower total alkalinity using Muriatic Acid (20° Baume/31.45% hcl)

DESIRED DECREASE IN PPM	GALLONS IN POOL					
	1,000	5,000	10,000	15,000	20,000	50,000
10 ppm	2.6 oz	12.8 oz	1.6 pts	1.2 qts	1.6 qts	4.0 qts
20 ppm	5.1 oz	1.6 lbs	1.6 qts	2.4 qts	3.2 qts	2.0 gal
30 ppm	7.7 oz	1.2 qts	2.4 qts	3.6 qts	1.2 gals	3.0 gals
40 ppm	10.2 oz	1.6 qts	3.2 qts	1.2 gals	1.6 gals	4.0 gals
50 ppm	12.8 oz	2.0 qts	4.0 qts	1.5 gals	2.0 gals	5.0 gals
60 ppm	15.3 oz	2.4 qts	1.2 gals	1.8 gals	2.4 gals	6.0 gals
70 ppm	1.1 pts	2.8 qts	1.4 gals	2.1 gals	2.8 gals	7.0 gals
80 ppm	1.3 pts	3.2 qts	1.6 gals	2.4 gals	3.2 gals	8.0 gals
90 ppm	1.4 pts	3.6 qts	1.8 gals	2.7 gals	3.6 gals	9.0 gals
100 ppm	1.6 pts	4.0 qts	2.0 gals	3.0 gals	4.0 gals	10 gals

How to increase calcium hardness using Suncoast Calcium Hardness

DESIRED INCREASE IN PPM	GALLONS IN POOL						
	1,000	5,000	10,000	15,000	20,000	25,000	50,000
10 ppm	1.9 oz	9.6 oz	1.2 lbs	1.8 lbs	2.4 lbs	2.8 lbs	6.0 lbs
20 ppm	3.9 oz	1.2 lbs	2.4 lbs	3.6 lbs	4.8 lbs	6.0 lbs	12.0 lbs
30 ppm	5.8 oz	1.8 lbs	3.6 lbs	5.4 lbs	7.2 lbs	9.0 lbs	18.0 lbs
40 ppm	7.7 oz	2.4 lbs	4.8 lbs	7.2 lbs	9.6 lbs	12.0 lbs	24.0 lbs
50 ppm	9.6 oz	3.0 lbs	6.0 lbs	9.0 lbs	12.0 lbs	15.0 lbs	30.0 lbs
60 ppm	11.5 oz	3.6 lbs	7.2 lbs	10.8 lbs	14.4 lbs	18.0 lbs	36.1 lbs
70 ppm	13.5 oz	4.2 lbs	8.4 lbs	12.6 lbs	16.8 lbs	21.0 lbs	42.1 lbs
80 ppm	15.4 oz	4.8 lbs	9.6 lbs	14.4 lbs	19.2 lbs	24.0 lbs	48.1 lbs
90 ppm	1.1 lbs	5.4 lbs	10.8 lbs	16.2 lbs	21.6 lbs	27.0 lbs	54.1 lbs
100 ppm	1.2 lbs	6.0 lbs	12.0 lbs	18.0 lbs	24.0 lbs	30.0 lbs	60.1 lbs

How to increase stabilizer or conditioner using Suncoast Conditioner

DESIRED INCREASE IN PPM	GALLONS IN POOL						
	1,000	5,000	10,000	15,000	20,000	25,000	50,000
10 ppm	1.3 oz	6.3 oz	12.5 oz	1.2 lbs	1.6 lbs	2.0 lbs	3.9 lbs
20 ppm	2.5 oz	12.5 oz	1.6 lbs	2.3 lbs	3.1 lbs	3.9 lbs	7.8 lbs
30 ppm	3.8 oz	1.2 lbs	2.3 lbs	3.5 lbs	4.7 lbs	5.9 lbs	11.7 lbs
40 ppm	5.0 oz	1.6 lbs	3.1 lbs	4.7 lbs	6.3 lbs	7.8 lbs	15.6 lbs
50 ppm	6.3 oz	2.0 lbs	3.9 lbs	5.9 lbs	7.8 lbs	9.8 lbs	19.5 lbs



Sparkling, healthy pools need trustworthy tools!



And in pool care, Porpoise® is the name you can trust! Over the past 25 years, Porpoise® has become one of America's largest suppliers of pool and spa maintenance supplies. From pool brushes, nets, and leaf baskets to replacement parts, Porpoise® delivers high-quality products that withstand the wear and tear of daily use.

You deserve the best tools for your pool. Look for the Porpoise® name next time you shop for pool care products. Visit your neighborhood Pinch A Penny for the entire Porpoise® product line.

porpoise
pool/spa equipment

Your Pool Profile

Pool

Shape: _____
 Dimensions: _____
 Capacity in gallons: _____
 Type of finish: _____

 Skimmer: (Make & Model) _____
 Timer: _____
 Lights: _____
 Transformer: _____
 Piping size/type: _____

 Date pool completed/purchased: _____

 Builder's name & telephone: _____

Pump

Make/motor: _____
 Horsepower: _____
 Make/time clock: _____

 Hours of operation: _____
 Date purchased: _____

Filter

Type: _____
 Make/model: _____

 Backwash pressure: _____
 Clean start-up pressure: _____
 Date purchased: _____

Automatic Pool Cleaner

Make/model: _____
 Serial number: _____
 Date purchased: _____

What else makes your pool different?
 (trees nearby, windy site, heavy use, small children, etc.).

Chlorination Equipment

Chlorine Generator/Salt Generator
 Type: _____
 Make/model: _____

Heater

Type: _____
 Make/model: _____
 BTU rating: _____
 Serial number: _____
 Date purchased: _____

Another helpful way to keep track of your pool and its equipment is to take lots of pictures. Your Pinch A Penny expert will appreciate your foresight and thoughtfulness should a problem arise.

Please bring this form into the store so we may add your pool's profile to your computer water analysis history.



For the store nearest you call 1-800-234-1616 or visit our website at www.pinchapenny.com

Glossary

Air Relief Valve: A valve on a filter that allows air to be discharged.

Algae: Microscopic forms of plant life which enter the pool by rain, wind, dust storms or other means. There are numerous varieties – some are free floating, others grow on walls and surfaces. There are green, black and yellow or mustard types among others. Some are more resistant to chemical treatment than others.

Algaecides: Chemicals that prevent and control algae. Others are designed to kill specific types of visible algae growth.

Algistat: A chemical that inhibits the growth of algae.

Available Chlorine: A term used in rating chlorine products as to the strength of the chlorine available per equal units of measurement. It is usually rated as percent. For example, 90% available chlorine means that 1.0 pound of that chlorine compound has 0.9 pounds of pure chlorine strength.

Backwash: The process of thoroughly cleaning the filter medium and/or elements by the reverse flow of water.

Bacteria: The germs that can contaminate your pool. Introduced by swimmers, dust, rain storms and other elements.

Balanced Water: The correct ratio of mineral content and pH that prevents pool water from becoming corrosive or scale forming.

Calcium Hardness: The amount of dissolved calcium in pool water. This should be approximately 200 ppm to 400 ppm, depending on pool finish. Higher hardness levels can cause cloudy water and scale. Lower levels can harm the pool and its equipment.

Cartridge: The element in a filter that can be removed and cleaned.

Chlorinator: A device to apply or to deliver a chlorine disinfectant to water at a controlled rate.

Chlorine: A chemical element that exists as a gas in its elemental form or as part of a chemical compound which is an oxidant and biocidal agent used in disinfecting pool water.

Chlorine Demand: The chlorine needed to kill algae and bacteria in a pool.

Chlorine Residual: The amount of chlorine remaining after the chlorine demand has been met.

Combined Chlorine: The portion of the total chlorine existing in water in chemical combination with ammonia, nitrogen, and/or organic compounds; mostly comprised of chloramines.

Corrosion: The etching, pitting or eating away of a material by chemical action.

Diatomaceous Earth (DE): Ground fossils used as a filter media in DE filters.

Etching: Corrosion of pool's surface by water that is acidic or low in total alkalinity and/or calcium hardness.

Filter: A device that removes undissolved particles from water by recirculating the water through a porous substance.

Glossary

Free Available Chlorine: The chlorine which has not combined with other things in the water like algae or bacteria. This chlorine is what is still available for sanitizing and can also be considered the chlorine residual.

Hardness: The amount of calcium and magnesium dissolved in water; measured by a test kit and expressed as parts per million (ppm).

Main Drain: The suction fitting located in the lowest portion of an in-ground pool. It's the principal intake for an in-ground pool's circulation system.

Muriatic Acid (Hydrochloric Acid): Use to lower pH and/or total alkalinity in pool water.

Organic Matter: Perspiration, urine, saliva, suntan oil, cosmetics, lotion, dead skin, leaves, and similar debris introduced to water by swimmers and the environment.

pH: A value expressing the relative acidity or basicity of a substance, such as water, as indicated by the hydrogen ion concentration.

PPM: The abbreviation for Parts Per Million. The unit of measurement used in chemical testing which indicates the parts by weight in relation to one million parts by weight of water.

Pump: A mechanical device, usually powered by an electric motor, which causes hydraulic flow and pressure for the purpose of filtration, heating and circulation of pool water.

Reagent: Chemical used to test pool water.

Sanitizer: Any substance that kills germs and bacteria, providing a sanitary water environment.

Shock Treatment: The practice of adding significant amounts of an oxidizing chemical (usually liquid chlorine) to water to destroy ammonia and nitrogenous and organic contaminants in water. Usually requires achieving 10-15 ppm of free available chlorine.

Skimmer: A part of the circulation system that removes debris from the surface of the water by drawing surface water through it.

Superchlorination: This term is often misused within the industry. Sometimes this word is used interchangeably with the term "shock". Other times, this term is used to mean elevating the current free chlorine level by an additional 5.0 ppm. Under this definition, the only way "superchlorination" would also "shock" is if the current free available chlorine level is at least 5-7 ppm.

Total Alkalinity: The ability or capacity of water to resist change in pH. A quantitative measurement of the amount of alkaline in water. Measured with a test kit and expressed as ppm.

Total Chlorine: The sum of both the free available and combined chlorines.

Total Dissolved Solids (TDS): A measure of the total amount of dissolved matter in water, such as calcium, magnesium, carbonates, bicarbonates, metallic compounds, etc.

Vacuum: A device used to clean the underwater surface of a pool or spa by creating suction in a hose line.



PINCH·A·PENNY
POOL·PATIO·SPA[®]
The Perfect People For A Perfect Pool

If only
cleaning
their
rooms
was this easy.

Cleaning your pool doesn't have to be a chore, especially when you have an automatic pool cleaner from Pinch A Penny. Automatic pool cleaners eliminate up to 90 percent of your manual cleaning time, which frees your family up for a lot more fun. Choose from some of the world's best brands, all available at Pinch A Penny. So make a clean sweep and save, with an automatic pool cleaner from Pinch A Penny. It'll leave your kids with more time to concentrate on cleaning up some of their other play things.

To Find out which cleaner would work best for you, just ask your Pinch A Penny expert.



Sta Rite Great White

Works effectively on all in-ground pool surfaces. 15" wide cleaning path and specially designed steering mechanism provides excellent pool coverage.



Baracuda G3

This top-of-the-line cleaner will thoroughly clean your in-ground pool floor and walls to automatically remove dirt, debris, bugs, twigs, leaves, sand and even pebbles.



Baracuda Quatro X7

The Baracuda X7 Quatro Automatic Pool Cleaner offers unparalleled cleaning coverage, getting in and out of tight corners and climbing vertical walls with ease.



Baracuda G2

Baracuda brings you the latest in cleaning technology with the G2 cleaner. It is suitable for In Ground pools as well as Above Ground Pools.



Kreepy Kruiser

An affordable suction-side cleaner, the Kreepy Kruiser is the ultimate in carefree operation and comes fully assembled. Plus, it features a free flow gauge and adjustable speed control.



Kreepy Krauly

Make a clean sweep with the exceptionally high-quality Kreepy Krauly. More vacuuming power. Wider intake picks up larger debris.



Polaris 380

Runs off its own booster pump, working independently from the rest of your pool system. The 380 vacuums, sweeps and scrubs the bottom and walls of any in-ground pool.



Polaris ATV

The Polaris ATV is a quick and efficient suction-side pool vacuum for in-ground swimming pools suitable for a variety of pool finishes. Connects easily to the pool skimmer or dedicated suction line.



Pentair Legend II

The Legend II automatic cleaner is the ideal choice for in-ground pools exposed to higher loads of leaves and debris. It is a pressure-side cleaner with a heavy-duty large capacity bag that removes with a quick twist.



Kreepy Krauly Sand Shark

The Sand Shark features exclusive SmartTrac steering which maneuvers the cleaner around tight corners, steps, ladders, and swim-outs. Scrubs and vacuums from the pool floor to the tile line.



Hayward Navigator

Perfect for concrete, fiberglass, or vinyl-lined pools. Pre-programmed so Navigators are a cinch to install. No booster pumps required for peak operation.



Hayward Pool Vac Ultra

Perfect for concrete, fiberglass, or vinyl-lined pools. Pre-programmed so Pool Vac Ultras are a cinch to install. No booster pumps required for peak operation.



AquaVac Tiger Shark

It's electric! Built-in computer calculates pool contours and size and programs itself. Powerful on-board pump, filter and motor, completely self contained. No hoses to attach. Plug in and go.



Join the largest retail pool supply franchise in the USA!

Own your own business and grow with Pinch A Penny, America's largest family of over 200 franchised pool supply stores.

Visit our website at www.pinchapenny.com, call us at 1-800-934-7890 or write us at the following address for more information today.

P.O. Box 6025 • Clearwater, FL 33758 Attn: Adam Heflin

**PINCH·A·PENNY
POOL·PATIO·SPA**

The Perfect People For A Perfect Pool